

PRODUCT FEATURED

Mobi-Flow Smart Monitoring

PRODUCT OVERVIEW

The Mobi-Flow smart meters are a revolutionary real-time water flow and consumption monitoring solution which allows users to monitor their water consumption remotely.

Through the Mobi-Water software, users get accurate water consumption information to make smart data-driven decisions to improve their water consumption or distribution trends.



FEATURES

- 5/10 min consistent uploading frequency.
- Available in solar-powered/grid-powered options.
- Available in different meter sizes and manufacturer preference.
- Available in GPRS and sigfox option.

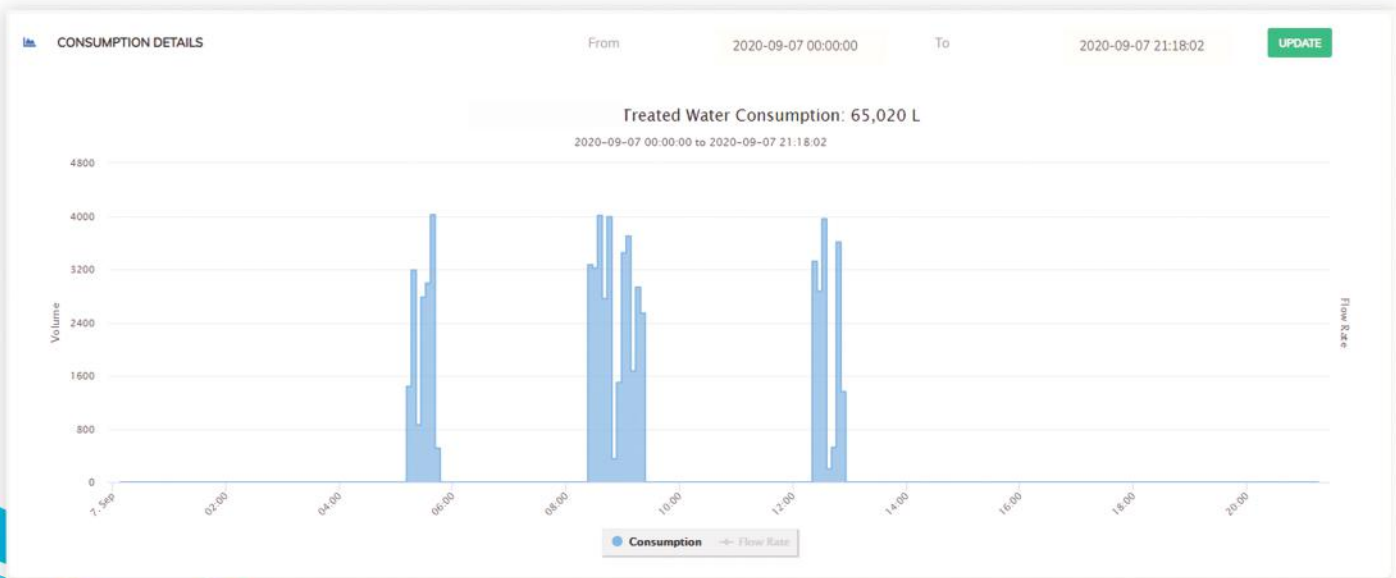
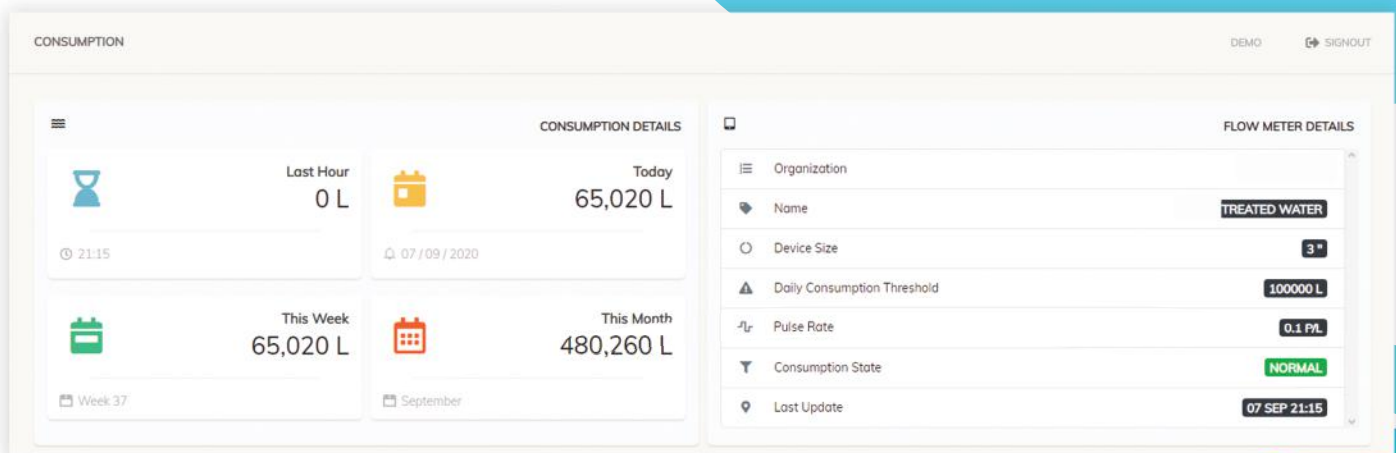
AREAS OF APPLICATION

- Factory/ industrial water monitoring.
- Commercial properties; office blocks, malls, hotels & restaurants.
- Water utility distribution line, check meters.
- Water projects monitoring and evaluation.

TECHNICAL SPECIFICATIONS

Power Supply	5-12V , 0.2A
Battery Capacity, Type	4400mAh, 18650 Rechargeable
Communication Module	GSM / GPRS
Upload Interval	5/10/ 20 Min. Frequency
Sensor Type	Pulse Counter
Operating Temperature	5 - 65°C
Case Dimensions	120 * 81 * 65mm
Compatible Meter Manufacturers	Elster Kent Meters / Wesan Meters

Mobi-Flow Monitoring Dashboard



FEATURES

- Water consumption analysis and reporting.
- Study trends and patterns of water consumption.
- Get notifications for low/high consumption level thresholds.
- Get data updates every 5-10 minutes.
- Track non-revenue water.
- Predict consumption growth.
- Track leakages by monitoring inactive user hours.
- This information is also accessible via SMS.